

Y800 Series Yagi's

Page 1 of 3

The Y800 series of base station yagi's can be manufactured to cover any 60MHz you require within the frequency range 700 to 960MHz.

Fixed Frequency models A, B and C are also available to cover Next G and GSM frequencies.

Mounting clamps, coaxial feeder cable, connectors and other installation accessories are all available separately.

Specifications	Y806	Y809	Y815
Construction	Aluminium, or add SS for stainless steel		
Frequency Range	700-960MHz		
Maximum Bandwidth	Any 60MHz (specify Transmit and Receive when ordering)		
Return Loss, VSWR	Better than -15dB, 1.5:1 across specified bandwidth		
Tuning	Factory	Factory	Factory
Number of Elements	6	9	15
Gain (nominal)	9 dBd	11.5 dBd	14 dBd
Polarisation	Mount Horizontal or Vertical as required		
Maximum Power	50 Watts	50 Watts	50 Watts
Impedance	50 Ohms	50 Ohms	50 Ohms
H Plane (at 3dB)	51°	42°	30°
E Plane (at 3dB)	46°	34°	28°
Front-to-Back Ratio	17.8 dB	15 dB	15 dB
Connector (fitted)	N-female fitted to 250mm RG59 cable tail		
Boom Length (at 850MHz)	0.6 metres	0.97 metres	1.85 metres
Longest Element	210mm	210mm	210mm
Weight in aluminium	0.5Kg	0.7Kg	1Kg
Weight in stainless steel	1.2Kg	1.5Kg	2.6Kg
Projected Area	0.035m ²	0.054m ²	0.075m ²
Wind Load at 160kph	4.5Kg	6.5Kg	9.5Kg
Strut Kit (order separately)	Not required		YS1-48
Mounting Accessories	1 x A48 for alum., 1 x S48 for S/Steel (order separately)		



Other Models Available

Y806PM	6 element yagi, panel mount connector
Y809PM	9 element yagi, panel mount connector
Y815PM	15 element yagi, panel mount connector

Y800 Series Yagi's

Page 2 of 3

The Y802 and Y803 series of base station yagi's can be manufactured to cover any 60MHz you require within the frequency range 700 to 960MHz.

Mounting clamps, coaxial feeder cable, connectors and other installation accessories are all available separately.

Specifications	Y802	Y803
Construction	Aluminium, or add SS for stainless steel	
Frequency Range	700-960MHz	
Maximum Bandwidth	Any 60MHz (specify Transmit and Receive when ordering)	
Return Loss, VSWR	Better than -15dB, 1.5:1 across specified bandwidth	
Tuning	Factory	Factory
Number of Elements	2	3
Gain (nominal)	3 dBd	4.5 dBd
Polarisation	Mount Horizontal or Vertical as required	
Maximum Power	50 Watts	50 Watts
Impedance	50 Ohms	50 Ohms
H Plane (at 3dB)	81°	76°
E Plane (at 3dB)	64°	57°
Front-to-Back Ratio	dB	15 dB
Connector (fitted)	N-female fitted to 250mm RG59 cable tail	
Boom Length @ 700MHz	0.46 metres	0.55 metres
Longest Element @ 700MHz	218mm (will decrease at higher frequency)	214mm (will decrease at higher frequency)
Weight in aluminium	0.30Kg	0.32Kg
Weight in stainless steel	0.75Kg	0.8Kg
Projected Area	0.015m ²	0.016m ²
Wind Load at 160kph	1.8Kg, 0.018kN	1.97Kg, 0.019kN
Mounting Accessories	1 x A48 for alum., 1 x S48 for S/Steel (order separately)	

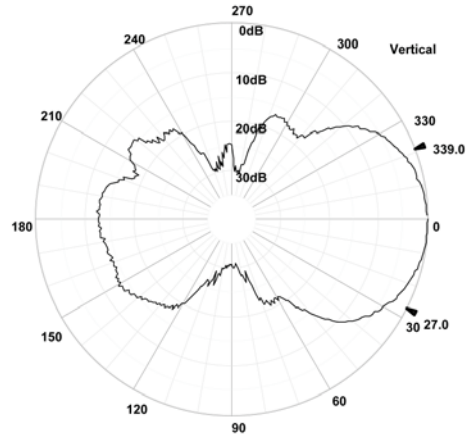
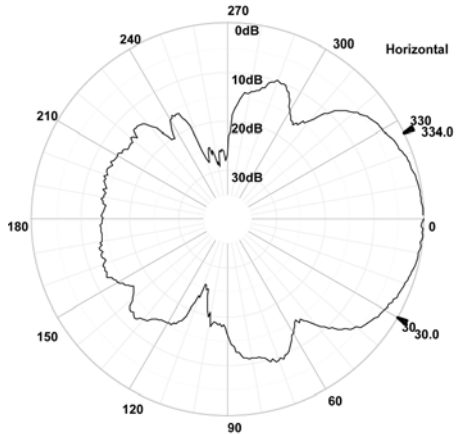


Y800 Series Yagi's

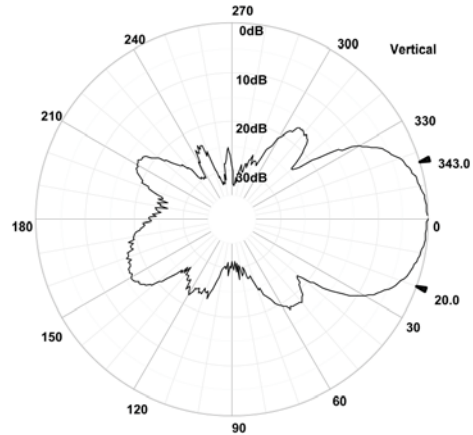
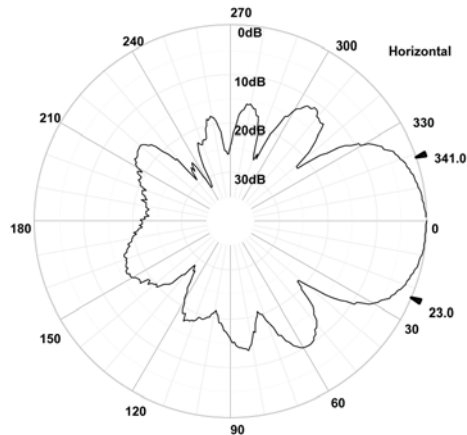
Page 3 of 3

Radiation Patterns

6 element Y806 at 880 MHz



9 element Y809 at 880 MHz



15 element Y815 at 960 MHz

